

# Pocket Work-From-Anywhere Solution



## INTRODUCTION

Many companies and industries are facing uncertainty when looking to the coming years due to pandemics. A lot of employees around the world are still working remotely. Even if they can go back to the office, they don't know when they will suddenly need to work remotely again. Slow home-office rollouts, security challenges, and expensive infrastructure are only some of the obstacles companies face. To support business continuity through the crisis and beyond, Edgecore Networks introduces the Pocket WFA Solution.

The Pocket WFA Solution reduces the time of deployment from days to minutes to swiftly roll out remote offices at a friendly price. Plus the SP-W2M-AC1200-WFH access point is just palm big, remote workers can carry it wherever they work easily, to further ensure business productivity. With EWS5203 WLAN Gateway-controller providing IT staff reliable and easy-to-use centralized management platform, enterprises and organizations can rest assured that their business is running smoothly.

## HIGHLIGHTS

- **Seamless Working Environment**

Remote workers connect to the same corporate SSID as they were in the office for automatically connected to the company VPN, extending enterprise service to the home.

- **Multiple VPN Group for Tiered Policies**

Customizable multiple VPN group for differentiated access policies for employee management.

- **Swiftly Build In-Office Environment**

Swiftly build an office-like environment for remote workers within 30 min, delivering in-office experience to remote workers. It means there's consistent access to the data and applications that are normally used in office.

- **Plug & Play**

The pre-configured template settings will be automatically apply to access point when it's connected. Moreover, with template-based wireless configuration, administrator can push the settings to multiple access points at once.

- **Secure VPN Tunnel**

Secure VPN Tunnel for all data transmission between APs and controller.

- **Small but Mighty**

The compact size of SP-W2M-AC1200-WFH AP with only weighs 82g, remote workers can carry it wherever they work easily, to further ensure business productivity.

- **Multiple Authentication Methods**

The Pocket WFA Solution provides multiple authentication methods, such as Local account, RADIUS authentication, Social Media Login, and 802.1X authentication.

- **Access Control Management**

Complete visibility of all users on network. Control user authentication and manage VPN access, corporate sites, information and system status.

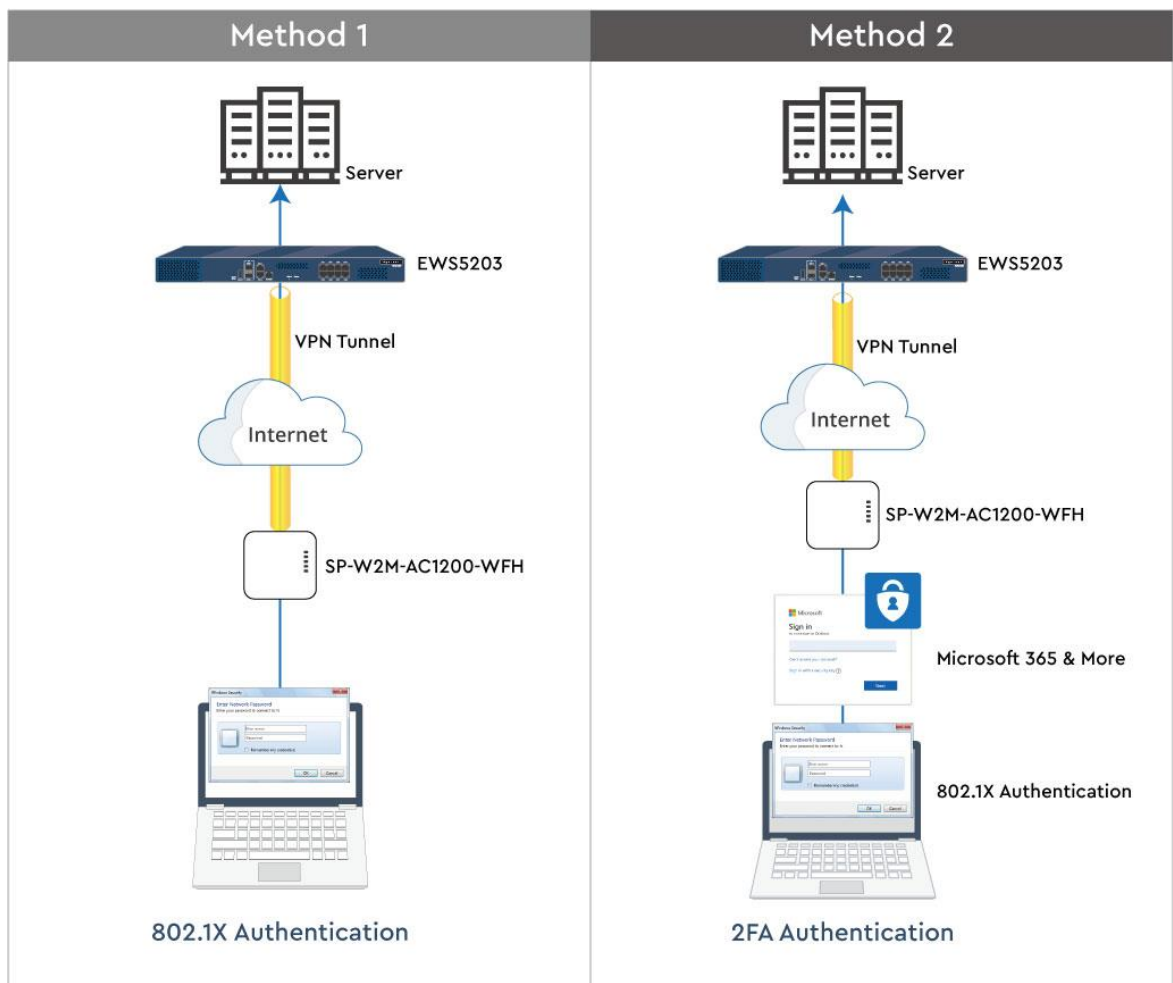
- **Microsoft 365 2FA authentication**

The Pocket WFA Solution integrates Microsoft 365 authentication. This allows organizations with these subscriptions to enable two factor authentication for their Office 365 users without requiring any additional subscription or database.

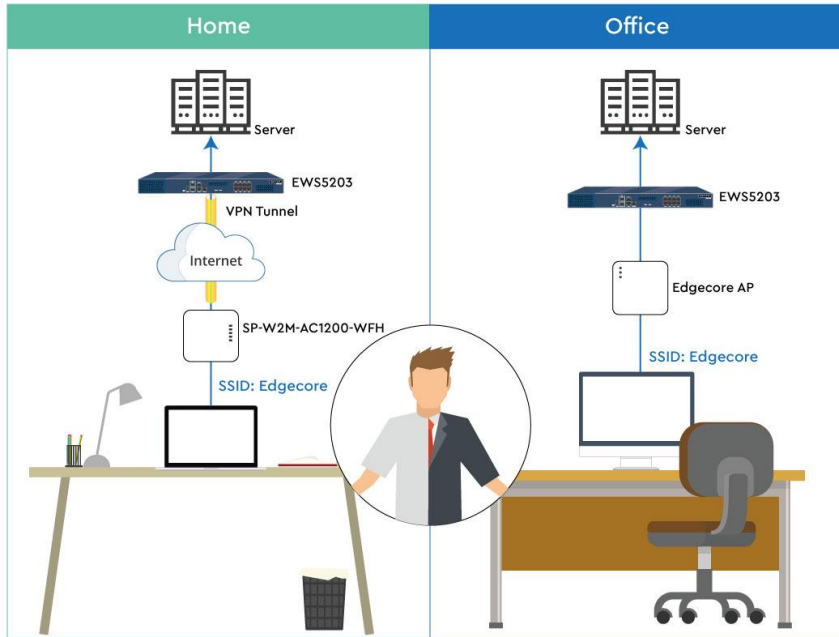
- **Split Tunnel**

Save network bandwidth for VPN tunnel, only using VPN tunnel when access enterprise network, other network access will pass through the public internet connection.

## MULTIPLE AUTHENTICATION METHODS



## SEAMLESS WORKING EXPERIENCE



## SP-W2M-AC1200-WFH ACCESS POINT SPECIFICATIONS

### HARDWARE

<b>Dimensions</b>	<ul style="list-style-type: none"> <li>83 x 83 x 22 mm (W x D x H)</li> </ul>
<b>Weight</b>	<ul style="list-style-type: none"> <li>82 g (0.18 lb)</li> </ul>
<b>Power</b>	<ul style="list-style-type: none"> <li>5V/2.1A DC (USB)</li> </ul>
<b>Power Consumption</b>	<ul style="list-style-type: none"> <li>5W Typical</li> <li>6.5W Maximum</li> </ul>
<b>Interface</b>	<ul style="list-style-type: none"> <li>1x 1000 Base-T Ethernet Port</li> <li>1x 100 Base-T Ethernet Port</li> <li>1x USB 2.0 Port (Power)</li> <li>Dual flash image support</li> </ul>
<b>LEDs</b>	<ul style="list-style-type: none"> <li>Power</li> <li>Wireless 2.4</li> <li>Wireless 5</li> <li>ETH 0</li> <li>ETH 1</li> </ul>
<b>Environmental Conditions</b>	<ul style="list-style-type: none"> <li>Operating Temperature: 0 to +50C° (32 to 122 F)</li> <li>Store Temperature: -40 to 70C° (-40 to 158 F)</li> </ul>
<b>Antenna</b>	<ul style="list-style-type: none"> <li>2.4 GHz: 4 dBi omni-directional</li> <li>5 GHz: 5 dBi omni-directional</li> </ul>

WI-FI	
<b>Standards</b>	<ul style="list-style-type: none"> <li>• 802.11 a/b/g/n/ac</li> <li>• Concurrent dual-band 2.4 &amp; 5 GHz</li> </ul>
<b>Support Data Rates</b>	<ul style="list-style-type: none"> <li>• 802.11b: 1, 2, 5.5, 11 Mbps</li> <li>• 802.11a/g: 6, 9, 12, 18, 24, 36, 48, 54 Mbps</li> <li>• 802.11n: 6.5 – 144 Mbps (20 MHz)</li> <li>• 802.11n: 13.5 – 300 Mbps (40 MHz)</li> <li>• 802.11ac: 6.5 – 173.4 Mbps (20 MHz)</li> <li>• 802.11ac: 13.5 – 400 Mbps (40 MHz)</li> <li>• 802.11ac: 29.3 – 866.6 Mbps (80 MHz)</li> </ul>
<b>Radio Chains</b>	<ul style="list-style-type: none"> <li>• 5 GHz: 2x2</li> <li>• 2.4 GHz: 2x2</li> </ul>
<b>Spatial Streams</b>	<ul style="list-style-type: none"> <li>• 2; MU-MIMO support</li> </ul>
<b>Aggregate Conducted Transmit Power*</b>	<ul style="list-style-type: none"> <li>• 2.4 GHz: 25 dBm</li> <li>• 5 GHz: 23 dBm</li> </ul>
<b>Channelization</b>	<ul style="list-style-type: none"> <li>• 2.4 GHz: 20 / 40 MHz</li> <li>• 5 GHz: 20 / 40 / 80 MHz</li> </ul>
<b>Frequency Range</b>	<ul style="list-style-type: none"> <li>• 2.400 – 2.483 GHz</li> <li>• 5.150 – 5.850 GHz</li> </ul>
<b>Operating Channels</b>	<ul style="list-style-type: none"> <li>• 5 GHz: 36 – 165 (US)</li> </ul>
<b>ESSID</b>	<ul style="list-style-type: none"> <li>• Up to 8 per radio (16 total)</li> </ul>
<b>Certification</b>	<ul style="list-style-type: none"> <li>• FCC</li> </ul>

## FEATURES

- AP/Client/Client WDS modes with Flexible Bridging and Routing
- IEEE 802.11e Wi-Fi Multimedia (WMM-QoS)
- WPA,WPA2-PSK,WPA2-AES, PSK and Enterprise security
- Admission control by client MAC address

## EWS5203 GATEWAY-CONTROLLER

### SPECIFICATIONS

SYSTEM CAPACITY	
<b>Managed APs</b>	<ul style="list-style-type: none"> <li>• Up to 300</li> </ul>
<b>Local Accounts</b>	<ul style="list-style-type: none"> <li>• Up to 10,000</li> </ul>
<b>On-Demand Accounts</b>	<ul style="list-style-type: none"> <li>• Up to 10,000</li> </ul>
<b>Managed Switches</b>	<ul style="list-style-type: none"> <li>• 10</li> </ul>
<b>Concurrent User Limit</b>	<ul style="list-style-type: none"> <li>• 3000; Switchable</li> </ul>

## HARDWARE SPECIFICATIONS

<b>Form Factor</b>	<ul style="list-style-type: none"> <li>19" (1U) Rack Mount (Mounting bracket included)</li> </ul>
<b>Dimensions (W x D x H)</b>	<ul style="list-style-type: none"> <li>42.6 cm x 27.0 cm x 4.4 cm</li> </ul>
<b>Weight</b>	<ul style="list-style-type: none"> <li>2.64 kg (5.81 lbs)</li> </ul>
<b>Power</b>	<ul style="list-style-type: none"> <li>Input: 100-240 VAC, 50/60 Hz (Power cord included)</li> </ul>
<b>Interfaces</b>	<ul style="list-style-type: none"> <li>WAN: 2 x 10/100/1000Base-T Ethernet, Auto-MDIX, RJ-45; or 2 x SFP</li> <li>LAN: 8 x 10/100/1000Base-T Ethernet, Auto-MDIX, RJ-45</li> <li>Console: 1 x RJ-45</li> <li>USB: 1 x USB3.0</li> </ul>
<b>LED Indicators</b>	<ul style="list-style-type: none"> <li>Power</li> <li>Status</li> </ul>
<b>Buttons</b>	<ul style="list-style-type: none"> <li>Reset</li> </ul>
<b>LCD Display</b>	<ul style="list-style-type: none"> <li>Yes</li> </ul>
<b>Environmental Conditions</b>	<ul style="list-style-type: none"> <li>Operating Temperature: 0°C (32°F) to 40°C (104°F)</li> <li>Operating Humidity: 10% to 90% non-condensing</li> </ul>

## USER SECURITY

<b>Authentication Types</b>	<ul style="list-style-type: none"> <li>802.1X</li> <li>UAM (browser-based)</li> <li>IP or MAC-based</li> </ul>
<b>Authentication Servers</b>	<ul style="list-style-type: none"> <li>Local</li> <li>On-Demand</li> <li>Guest</li> <li>RADIUS</li> <li>LDAP</li> <li>NT Domain</li> <li>SIP</li> <li>POP3</li> <li>Microsoft 365</li> </ul>
<b>Customizable Captive Portal</b>	<ul style="list-style-type: none"> <li>Yes</li> </ul>
<b>Customizable Wild Card Walled Garden</b>	<ul style="list-style-type: none"> <li>Yes</li> </ul>
<b>User Blacklisting</b>	<ul style="list-style-type: none"> <li>User Blacklisting</li> </ul>

**ACCOUNT GENERATION**

<b>On-demand Account</b>	<ul style="list-style-type: none"> <li>• SMS registration</li> <li>• Purchase via PayPal</li> <li>• Hotel PMS integration</li> <li>• Selectable Billing Plans</li> <li>• Account Ticket Printer</li> </ul>
<b>On-demand Account Flexibility</b>	<ul style="list-style-type: none"> <li>• Customizable Billing Plans</li> <li>• Account Credentials</li> <li>• Access Codes</li> <li>• Smart Login</li> </ul>
<b>Guest Wi-Fi Account</b>	<ul style="list-style-type: none"> <li>• Limitation by duration and volume</li> <li>• Configurable reactivation time</li> <li>• E-mail registration and activation</li> </ul>
<b>Social Media Login</b>	<ul style="list-style-type: none"> <li>• Yes</li> </ul>

**NETWORK SECURITY**

<b>VPN</b>	<ul style="list-style-type: none"> <li>• Remote</li> <li>• Site-to-Site</li> </ul>
<b>Tunneling Protocols</b>	<ul style="list-style-type: none"> <li>• IPsec</li> <li>• PPTP</li> </ul>
<b>Network Isolation</b>	<ul style="list-style-type: none"> <li>• Intra-VLAN or Port</li> <li>• Inter-VLAN or Port</li> </ul>
<b>Rogue AP Detection</b>	<ul style="list-style-type: none"> <li>• Yes</li> </ul>
<b>Certificates</b>	<ul style="list-style-type: none"> <li>• Built-in Root CA</li> </ul>

**DEVICE MOBILITY**

<b>Fast Roaming Between Access Points</b>	<ul style="list-style-type: none"> <li>• Yes</li> </ul>
<b>Cross Gateway Roaming</b>	<ul style="list-style-type: none"> <li>• Yes</li> </ul>
<b>WISPr Smart Client</b>	<ul style="list-style-type: none"> <li>• Yes</li> </ul>
<b>Mobile Device Recognition for Optimized Captive Portal</b>	<ul style="list-style-type: none"> <li>• Yes</li> </ul>
<b>Multiple Device Logins Per Account</b>	<ul style="list-style-type: none"> <li>• Yes</li> </ul>
<b>QR Code Automatic Login</b>	<ul style="list-style-type: none"> <li>• Yes</li> </ul>
<b>Device Plug-and-Play</b>	<ul style="list-style-type: none"> <li>• Yes</li> </ul>
<b>On-Demand Smart Login without Re-Authentication</b>	<ul style="list-style-type: none"> <li>• Yes</li> </ul>

### SYSTEM MANAGEMENT

<b>Browser-Based Configuration</b>	<ul style="list-style-type: none"> <li>• Yes</li> </ul>
<b>Administrator Accounts</b>	<ul style="list-style-type: none"> <li>• Multiple tiered access privileges</li> <li>• Monitor each admin's current accessed page</li> </ul>
<b>System Time</b>	<ul style="list-style-type: none"> <li>• NTP synchronization</li> <li>• Manually configured</li> </ul>
<b>System Backup &amp; Restore</b>	<ul style="list-style-type: none"> <li>• Yes</li> </ul>
<b>Certificates</b>	<ul style="list-style-type: none"> <li>• Built-in Root CA</li> </ul>
<b>SNMP</b>	<ul style="list-style-type: none"> <li>• Yes; v2c</li> </ul>
<b>Network Utilities</b>	<ul style="list-style-type: none"> <li>• Yes; built-in packet capture</li> </ul>

### AP MANAGEMENT

<b>Automatic AP Discovery Restore</b>	<ul style="list-style-type: none"> <li>• Yes</li> </ul>
<b>Automatic AP Provisioning</b>	<ul style="list-style-type: none"> <li>• Yes; template-based</li> </ul>
<b>AP Configuration Backup &amp; Restore</b>	<ul style="list-style-type: none"> <li>• Yes</li> </ul>
<b>AP Firmware Batch Upgrade</b>	<ul style="list-style-type: none"> <li>• Yes</li> </ul>
<b>Tunneled AP Management</b>	<ul style="list-style-type: none"> <li>• Yes; both L2 &amp; L3 APs</li> </ul>
<b>AP Load Balancing</b>	<ul style="list-style-type: none"> <li>• Yes</li> </ul>
<b>Automatic AP Firmware Upgrade</b>	<ul style="list-style-type: none"> <li>• Yes</li> </ul>
<b>Automatic Periodically AP Backup</b>	<ul style="list-style-type: none"> <li>• Yes</li> </ul>

### SWITCH MANAGEMENT

<b>Automatic Switch Discovery</b>	<ul style="list-style-type: none"> <li>• Yes</li> </ul>
<b>Automatic Switch Provisioning</b>	<ul style="list-style-type: none"> <li>• Yes; template-based</li> </ul>
<b>Switch Configuration Backup &amp; Restore</b>	<ul style="list-style-type: none"> <li>• Yes</li> </ul>
<b>Switch Power Scheduling</b>	<ul style="list-style-type: none"> <li>• Yes</li> </ul>

## USER MANAGEMENT

<b>User Policy Assignment</b>	<ul style="list-style-type: none"> <li>• Role-based</li> <li>• Time &amp; location dependent</li> </ul>
<b>Bandwidth Limitation</b>	<ul style="list-style-type: none"> <li>• User-based</li> <li>• Group-based</li> <li>• Bandwidth throttling</li> </ul>
<b>Traffic Classification / Remarking</b>	<ul style="list-style-type: none"> <li>• Yes; 802.1p / DSCP</li> </ul>
<b>Stateful Firewall</b>	<ul style="list-style-type: none"> <li>• Yes; each rule with individual enforcement schedules</li> </ul>
<b>Static Route Assignment</b>	<ul style="list-style-type: none"> <li>• Yes</li> </ul>
<b>Concurrent Session Limit</b>	<ul style="list-style-type: none"> <li>• Yes</li> </ul>
<b>IP Address Reassignment</b>	<ul style="list-style-type: none"> <li>• Allow clients to obtain different IP addresses after authentication</li> </ul>

## NETWORK SERVICES

<b>Redundancy (High Availability)</b>	<ul style="list-style-type: none"> <li>• N+1 with automatic synchronization</li> </ul>
<b>Internet Protocols Supported</b>	<ul style="list-style-type: none"> <li>• IPv4</li> <li>• IPv6</li> </ul>
<b>DHCP Server / DHCP Relay</b>	<ul style="list-style-type: none"> <li>• Yes</li> </ul>
<b>Network Address Translation</b>	<ul style="list-style-type: none"> <li>• Yes</li> </ul>
<b>Built-in HTTP Proxy Server</b>	<ul style="list-style-type: none"> <li>• Yes</li> </ul>
<b>WAN Port Load Balancing</b>	<ul style="list-style-type: none"> <li>• Yes</li> </ul>
<b>Automatic AP Firmware Upgrade</b>	<ul style="list-style-type: none"> <li>• Yes</li> </ul>
<b>Dynamic Routing</b>	<ul style="list-style-type: none"> <li>• Yes</li> </ul>
<b>Local DNS Records</b>	<ul style="list-style-type: none"> <li>• Yes</li> </ul>
<b>Hotel PMS Integration</b>	<ul style="list-style-type: none"> <li>• Innkey PMS</li> <li>• Oracle Hospitality OPERA</li> <li>• IDS Next</li> </ul>
<b>Integrated Billing &amp; Accounting System</b>	<ul style="list-style-type: none"> <li>• Yes</li> </ul>
<b>Billing Quota Types</b>	<ul style="list-style-type: none"> <li>• By duration</li> <li>• By traffic volume</li> </ul>



**SYSTEM & NETWORK STATUS**

<b>System Dashboard</b>	• Yes
<b>Graphical System Performance Reports</b>	• Yes
<b>Traffic Volume Reports</b>	• Yes
<b>System Process Monitor</b>	• Yes
<b>Online Device Monitoring</b>	• Yes
<b>Active Sessions List</b>	• Yes
<b>Configurable SYSLOG Severity</b>	• Yes
<b>SMTP (E-mail) Notifications</b>	• Yes
<b>Multiple Concurrent E-mail Notification Receivers</b>	• Yes

**NETWORK ACTIVITY LOGS**

<b>System Log (SYSLOG)</b>	• Yes
<b>CAPWAP Log</b>	• Yes
<b>Configuration Change Log</b>	• Yes
<b>RADIUS Server Log</b>	• Yes
<b>User Events Log</b>	• Yes
<b>User HTTP Web Log</b>	• Yes
<b>Firewall Log</b>	• Yes
<b>DHCP Server/Lease Log</b>	• Yes
<b>PMS Interface Log</b>	• Yes
<b>On-Demand Billing Report</b>	• Yes
<b>AP Status E-mail Notification</b>	• Yes
<b>AP Management Event Log</b>	• Yes
<b>Logging to External FTP</b>	• Yes
<b>Configurable Logs &amp; Reporting Intervals</b>	• Yes